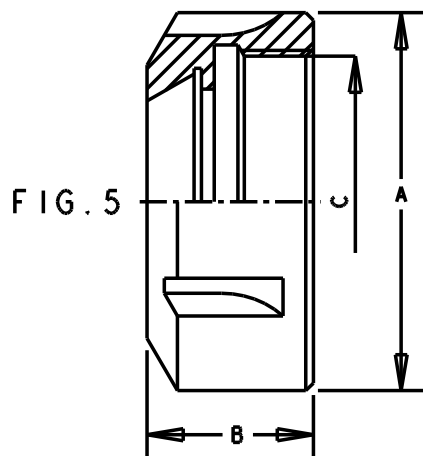
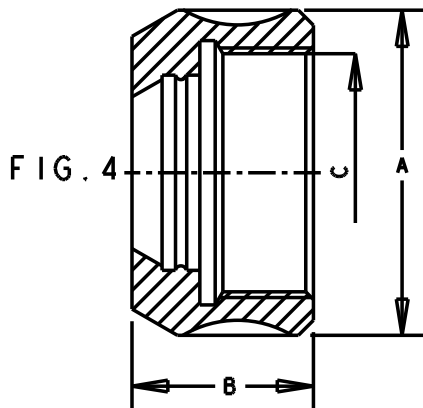
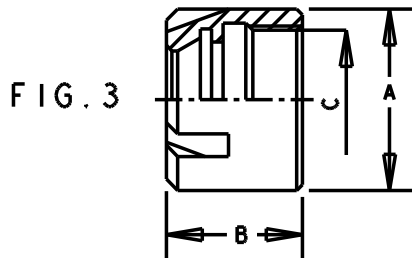
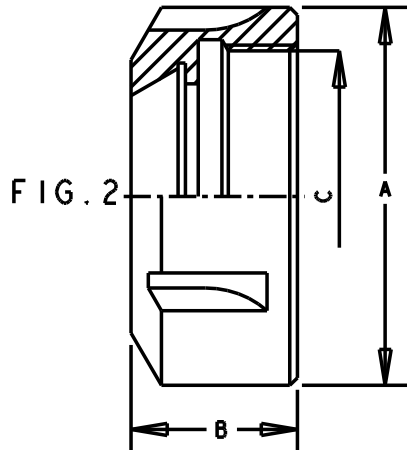
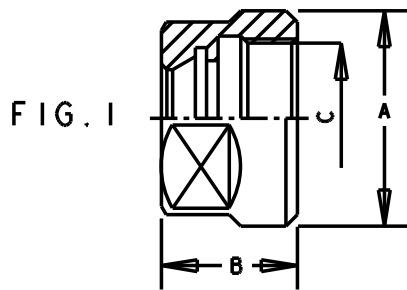


CLAMPING NUT

DIMENSIONS IN MM



HEXAGONAL NUT FOR RD COLLET CHUCK (FIG. 1)

UM/RD	A	B	C	SPANNER TO BE USED
UM/RD11	19.0	11.5	M14x0.75	GS17
UM/RD16	28.0	17.0	M22x1.5	GS25
UM/RD20	34.0	19.0	M25x1.5	GS30

SLOTTED NUT FOR RD COLLET CHUCK (FIG. 2)

UM/RD	A	B	C	SPANNER TO BE USED
UM/RD25	42.0	20.0	M32x1.5	E-25
UM/RD32	50.0	22.0	M40x1.5	E-32
UM/RD40	63.0	25.0	M50x1.5	E-40
UM/RD50	78.0	35.0	M64x2.0	E-50

MINI NUT FOR RD COLLET CHUCK (FIG. 3)

UM/RD M	A	B	C	SPANNER TO BE USED
UM/RD8M	12.0	11.0	M10x0.75	E-8M
UM/RD11M	16.0	11.5	M13x0.75	E-11M
UM/RD16M	22.0	17.0	M19x1.00	E-16M
UM/RD20M	28.0	19.0	M24x1.00	E-20M
UM/RD25M	35.0	20.0	M30x1.00	E-25M

SLOTTED NUT FOR RDO COLLET CHUCK (FIG. 4)

UM/RDO	A	B	C	SPANNER TO BE USED
UM/RDO25	43.0	24.0	M33x1.5	E-25
UM/RDO35	60.0	30.0	M48x2.0	E-40
UM/RDO44	72.0	34.0	M60x2.5	E-50

SLOTTED NUT FOR RDG COLLET CHUCK (FIG. 5)

UM/RDG	A	B	(ACME) C	SPANNER TO BE USED
UM/RDG75	51.0	23.0	1 1/2" - 12TPI	E-32
UM/RDG100	63.0	30.0	1 7/8" - 12TPI	E-40
UM/RDG150	89.0	40.0	41/64" - 12TPI	EG-50

ORDERING INSTRUCTION

UM / RD25	UM / RD25M / M
NUT	NUT
COLLET TYPE	MINI NUT COLLET TYPE