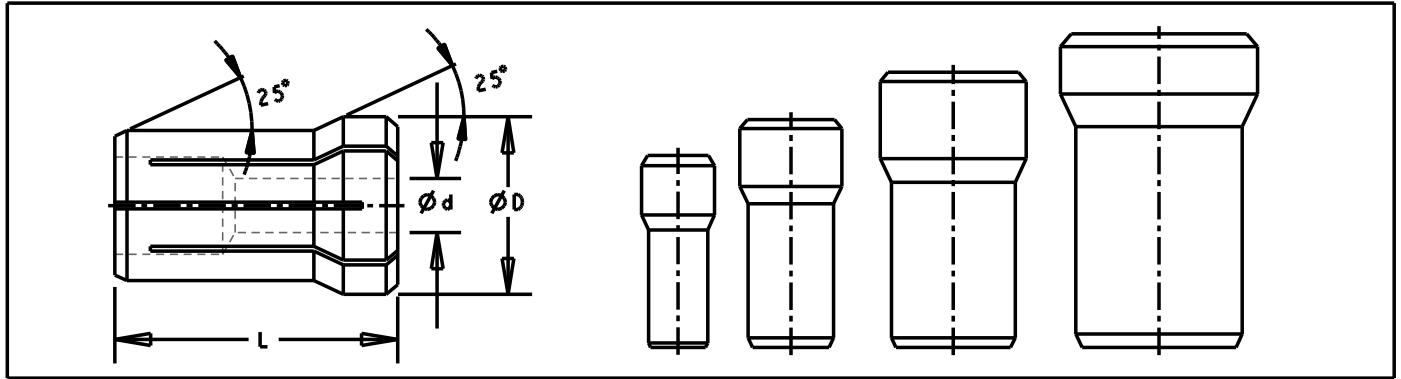


RDA COLLETS

Double angle collets



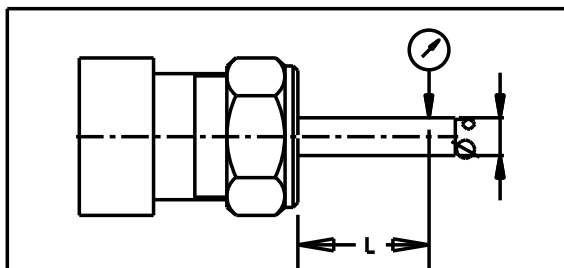
Type of Collet	ØD	L	BORE				Collet Collapses by		
			Ød		In step of		Type	Inch	mm
			Inch	mm	Inch	mm			
			From - To	From - To					
RDA300	9.5	25.5	1/32-3/16	0.5-4.5	1/64	0.50	C/B	1/64	0.50
			13/64-1/4	5.0-6.5					
RDA200	13.5	30.4	1/32-9/32	0.5-7.0	1/64	0.50	C/B	1/64	0.50
			19/64-3/8	7.5-9.5					
RDA100	19.47	36.7	1/32-7/16	0.5-11.0	1/64	0.50	C/B	1/64	0.50
			29/64-9/16	11.5-14.5					
RDA180	26.045	41.7	1/32-5/8	0.5-16.0	1/64	0.50	C/B	1/64	0.50
			41/64-3/4	16.5-19.0					

Also available are:

• C/B = Counterbore, T/B = Throughbore

1. Sealed collets for coolant through application
2. Any other bore size on request at extra cost
3. High precision/Ultra precision collet on request at extra cost

RUNOUT DETAILS:



Dia-d Inch	Length-L mm (Min.)	# Tolerance mm-TIR (Max.)		
		Precision(-)	High Precision(HP)	Ultra Precision(UP)
0.5mm-1/64	4D	0.025	0.015	0.005
3/16-3/4	25.4	0.025	0.015	0.005

Ordering Instruction: RDA200-1/4"-HP

Collet type Bore size # Tolerance range