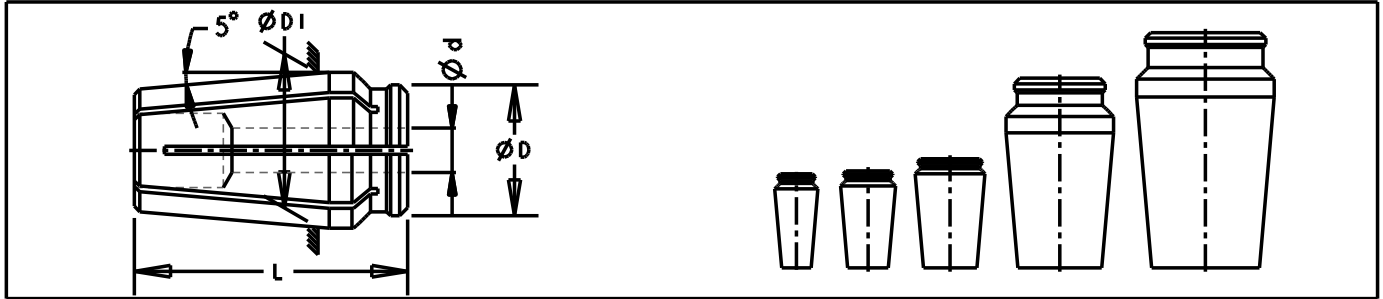


# RDF COLLETS

Interchangeable with Universal  
Acura-Flex Style collet



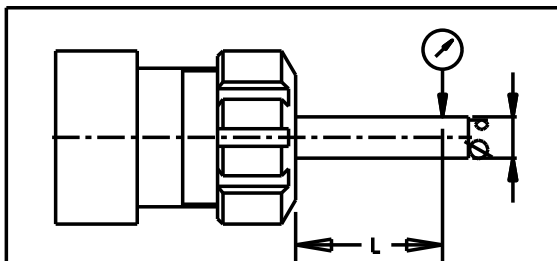
Type of Collet	ØD	ØDI	L	BORE				Collet Collapses by		
				Ød		In step of		Type	Inch	mm
				Inch	mm	Inch	mm			
RDF25	10.19	11.112	25.40	1/32-1/16	0.5-1.5	1/64	0.50	C/B*	1/64	0.50
				5/64-1/4	2.0-6.5					
RDF38	13.36	14.275	26.20	5/64-3/8	2.0-9.5	1/64	0.50	T/B	1/64	0.50
RDF50	17.43	18.288	29.46	5/64-13/64	2.0-5.0	1/64	0.50	C/B	1/64	0.50
				5/64-1/2	2.0-12.5					
RDF75	24.54	28.727	51.20	5/64-3/8	2.0-9.5	1/64	0.50	C/B	1/64	0.50
				5/64-25/32	2.0-20.0					
RDF100	32.54	36.728	63.50	3/16-3/8	5.0-9.5	1/64	0.50	C/B	1/64	0.50
				3/16-1	5.0-25.0					

\* C/B = Counterbore, T/B = Throughbore

Also available are:

1. Sealed collets for coolant through application
2. Any other bore size on request at extra cost
3. High precision/Ultra precision collet on request at extra cost

## RUNOUT DETAILS:



Dia-d Inch	Length-L mm (Min.)	# Tolerance mm-TIR (Max.)		
		Precision(-)	High Precision(HP)	Ultra Precision(UP)
0.5mm-1/164	At Nose	0.025	0.015	0.005
3/16-2	20 or 25.4	0.013	0.010	0.005

Ordering Instruction: RDF75-1/4"-HP

Collet type  Bore size  # Tolerance range