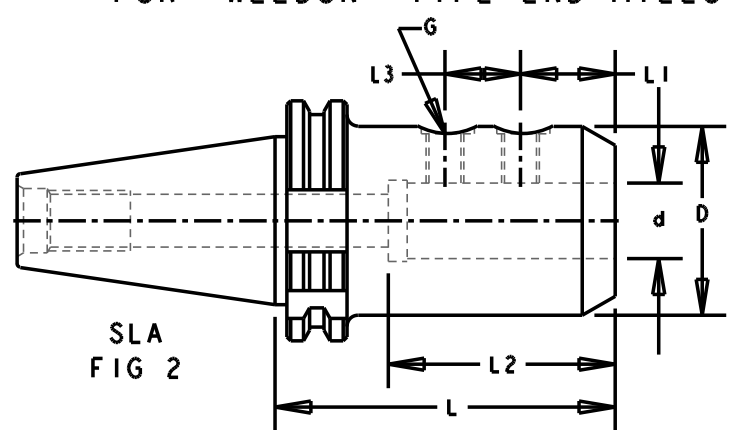
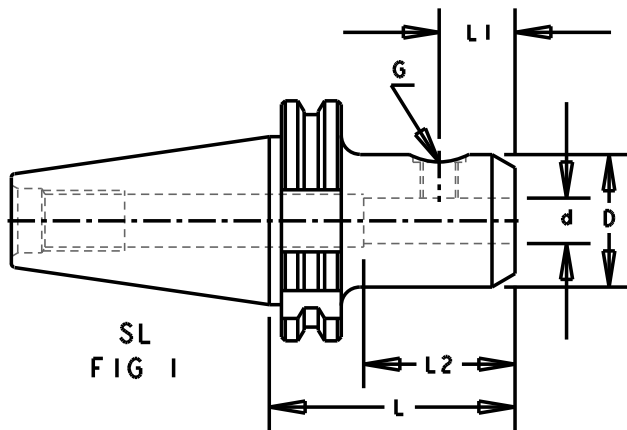


FOR "WELDON" TYPE END MILLS



DIMENSIONS IN MM

DESIGNATION	d	L	D	L1	L2		L3	G	FIG.
					MIN	MAX			
TC30/SL6/50	6.0	50.0	25.0	18.0	37.0	-	-	M6	1
TC30/SL8/50	8.0	50.0	28.0	18.0	37.0	-	-	M8	1
TC30/SL10/50	10.0	50.0	35.0	20.0	41.0	-	-	M10	1
TC30/SL12/50	12.0	50.0	42.0	22.5	46.0	-	-	M12	1
TC30/SL16/63	16.0	63.0	48.0	24.0	49.0	-	-	M14	1
TC40/SL6/50	6.0	50.0	25.0	18.0	37.0	-	-	M6	1
TC40/SL8/50	8.0	50.0	28.0	18.0	37.0	-	-	M8	1
TC40/SL10/50	10.0	50.0	35.0	20.0	41.0	-	-	M10	1
TC40/SL12/50	12.0	50.0	42.0	22.5	46.0	-	-	M12	1
TC40/SL16/63	16.0	63.0	48.0	24.0	49.0	-	-	M14	1
TC40/SL20/63	20.0	63.0	52.0	25.0	51.0	-	-	M16	1
TC40/SLA25/100	25.0	100.0	65.0	24.0	59.0	-	25.0	M20x2	2
TC40/SLA32/100	32.0	100.0	72.0	24.0	63.0	-	28.0	M20x2	2
TC50/SL6/50	6.0	50.0	25.0	18.0	37.0	-	-	M6	1
TC50/SL8/50	8.0	50.0	28.0	18.0	37.0	-	-	M8	1
TC50/SL10/50	10.0	50.0	35.0	20.0	41.0	-	-	M10	1
TC50/SL12/50	12.0	50.0	42.0	22.5	46.0	-	-	M12	1
TC50/SL16/63	16.0	63.0	48.0	24.0	49.0	-	-	M14	1
TC50/SL20/63	20.0	63.0	52.0	25.0	51.0	-	-	M16	1
TC50/SLA25/80	25.0	80.0	65.0	24.0	59.0	-	25.0	M20x2	2
TC50/SLA32/100	32.0	100.0	72.0	24.0	63.0	-	28.0	M20x2	2

SHEET- TC (WELDON)

NOTE:

- THE FRONT END DIMENSIONS AS PER DIN 6359-2
- FOR OTHER TAPERS VIZ BT & CAT, SEE SEPARATE SHEETS.
- BALANCING: NORMAL 6.3G AT 10000 RPM.
- ANY SPECIAL SIZES CAN BE MADE TO CUSTOMERS REQUEST.

ORDERING INSTRUCTION

TC40/SLA25/90

