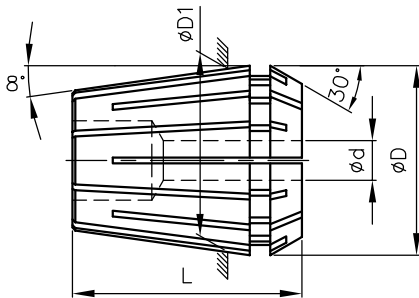
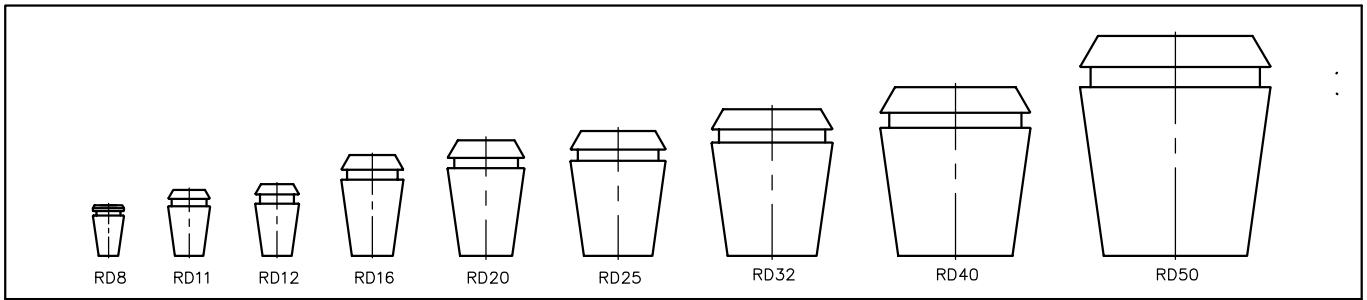


RD COLLET (ER TYPE)

DIN6499 - FORM B



TYPE OF COLLET	ϕD	$\phi D1$	L	BORE DETAILS						COLLET		NO OF		
				ϕd BORE RANGE				IN STEP OF		TYPE	COLLAPSES BY		PCS/SET	
				MM		INCH		MM	INCH		MM	INCH	MM	INCH
				FROM	TO	FROM	TO							
RD8 **	8.5	8.0	13.8	1.0	2.5	1/16	7/64	0.5	1/64	C/B *	0.5	1/64	9	5
				3.0	5.0	1/8	3/16							
RD11	11.5	11.0	18.0	1.0	2.5	1/16	7/64	0.5	1/64	C/B	0.5	1/64	13	7
				3.0	7.0	1/8	1/4							
RD12 **	12.0	12.0	19.5	1.0	3.0	1/16	1/8	0.5	1/64	C/B	0.5	1/64	9	7
				4.0	7.0	5/32	1/4	1.0	1/32	T/B	1.0	1/32		
RD16	17.0	16.0	27.5	1.0	4.0	1/16	3/16	1.0	1/32	C/B	1.0	1/32	10	12
				5.0	10.0	13/64	13/32			T/B				
RD20	21.0	20.0	31.5	2.0	5.0	1/16	13/64	1.0	1/32	C/B	1.0	1/32	12	15
				6.0	13.0	15/64	1/2			T/B				
RD25	26.0	25.0	34.0	2.0	5.0	1/16	13/64	1.0	1/32	C/B	1.0	1/32	15	19
				6.0	16.0	15/64	5/8			T/B				
RD32	33.0	32.0	40.0	3.0	7.0	3/32	19/64	1.0	1/32	C/B	1.0	1/32	18	22
				8.0	20.0	5/16	3/4			T/B				
RD40	41.0	40.0	46.0	4.0	9.0	1/8	3/8	1.0	1/32	C/B	1.0	1/32	23	29
				10.0	26.0	25/64	1"			T/B				
RD50	52.0	50.0	60.0	6.0	10.0	15/64	15/32	2.0	5/64	C/B	2.0	5/64	12	21
				12.0	34.0	1/2	1 3/8			T/B				

** RD8, RD12—NOT IN DIN6499

* C/B = Counterbore, T/B = Throughbore

Also available are:

1. Any other bore size on request at extra cost
2. High precision/Ultra precision collet on request at extra cost

Note: For Runout details refer page no. 6

Ordering Instruction:

RD32 - 12 - HP

Collet Type

Bore size

Runout (TIR)
(Refer page no.6)