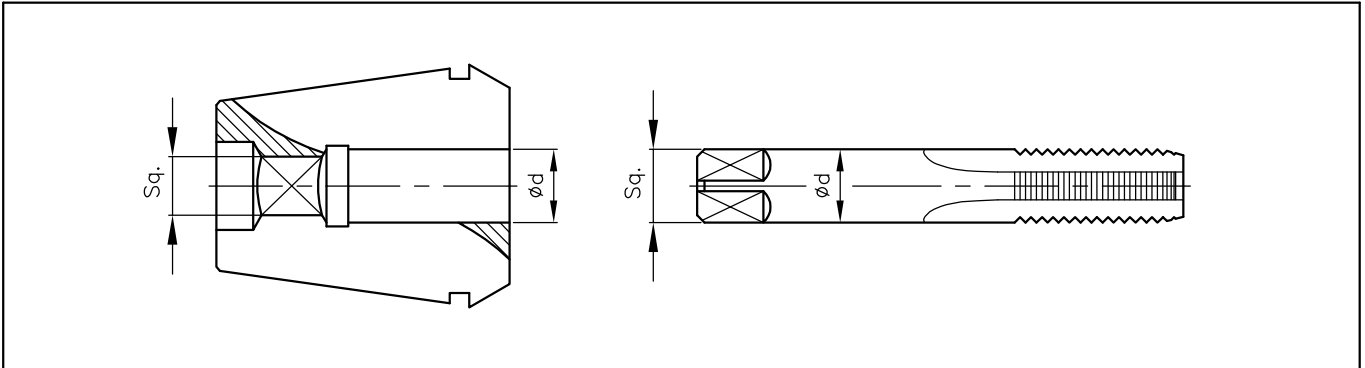


TAPPING COLLETS

Collets for Tap Holding (For DIN,ISO,ANSI & JIS Taps)



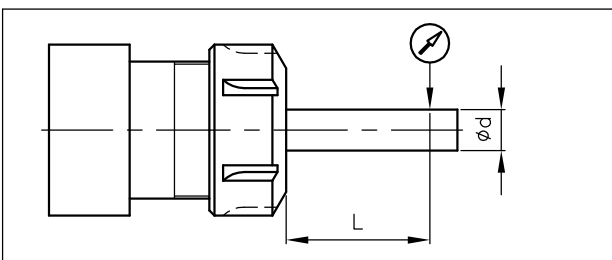
Since there exists number of CNC turning and machining centres equipped with rigid tapping features we developed collet type RDTC & RDGTC.

These collets are also available with SEALED hole for coolant through application. referred as RD..TC SEALED and RDG..TC SEALED

These collets are designed with internal features that matches the tap shank dia. & square and can be used with regular collet holders.

For clamping tap use of ball bearing nut is recommended. While placing an order always indicate collet bore (dia. of tap shank) and tap standard. Also verify whether dia. of tap shank and square size matches with the corresponding to DIN,ISO,ANSI & JIS tap standard.

RUNOUT DETAILS:



CLAMPING RANGE ϕd		L (MM)	RUNOUT (TIR)	
ABOVE	UPTO		ON BORE	ON SQUARE
1.0	3.0	10.0	0.015	0.025
3.0	6.0	16.0	0.015	0.025
6.0	10.0	25.0	0.015	0.025
10.0	18.0	40.0	0.020	0.030
18.0	26.0	50.0	0.020	0.030
26.0	40.0	60.0	0.020	0.030

Ordering Instruction:

1. Tapping collet

RD32TC - 12 - DIN

Collet Type Bore size Tap Std.

2. Tapping-sealed collet

RDG100 - 0.255" - ANSI
TC SEALED

Collet Type Bore size Tap Std.