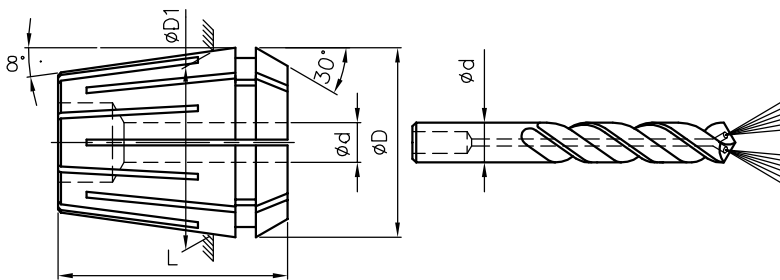
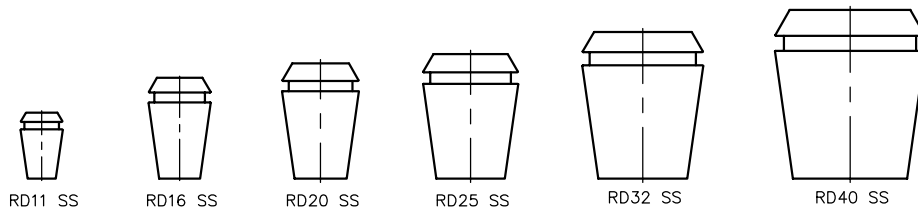


**RD FORM B (ER TYPE)
STEEL SEALED COLLETS**

**Nominal diameter collets
(For coolant through application)**



TYPE OF COLLET	ϕD	$\phi D1$	L	BORE DETAILS						
				ϕd BORE RANGE				IN STEP OF		TYPE
				MM		INCH		MM	INCH	
				FROM	To	FROM	To			
RD11 SS	11.5	11.0	18.0	3.0	7.0	1/8	1/4	0.5/1.0	1/64	T/B
									1/32	
RD16 SS	17.0	16.0	27.5	3.0	3.5	1/8	9/64	0.5/1.0	1/64	C/B
				4.0	10.0	5/32	13/32		1/32	T/B
RD20 SS	21.0	20.0	31.5	4.0	5.5	5/32	7/32	0.5/1.0	1/64	C/B
				6.0	13.0	15/64	1/2		1/32	T/B
RD25 SS	26.0	25.0	34.0	4.0	5.5	5/32	7/32	0.5/1.0	1/64	C/B
				6.0	16.0	15/64	5/8		1/32	T/B
RD32 SS	33.0	32.0	40.0	4.0	7.5	5/32	19/64	0.5/1.0	1/64	C/B
				8.0	20.0	5/16	3/4		1/32	T/B
RD40 SS	41.0	40.0	46.0	4.0	8.5	5/32	11/32	0.5/1.0	1/64	* C/B
				9.0	26.0	23/64	1"		1/32	* T/B

* C/B = Counterbore, T/B = Throughbore

Also available are:

1. Any other boresize on request at extra cost
2. High pressure coolant, Liquid sealing applying.
3. Collapsing capacity of Max. 0.1 ~ 0.5 mm
4. Complete sealing of collet in steel sealed only.
5. Special slitting new type design.
6. Withstand coolant pressure upto 1500 psi (110 bar)

Note: A. For Runout details refer page no. 6

Ordering Instruction:

