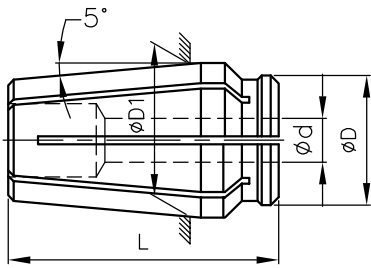


RDF COLLETS

Interchangeable with Universal
Acura-Flex Style collet



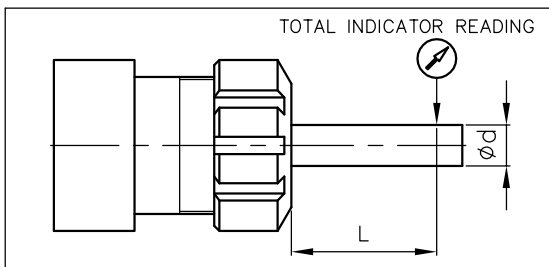
TYPE OF COLLET	ØD	ØD1	L	BORE DETAILS						COLLET COLLAPSES BY		
				ød BORE RANGE				IN STEP OF		TYPE	INCH	MM
				INCH		MM		INCH	MM			
				FROM	To	FROM	To					
RDF25	10.19	11.112	25.40	1/32	1/16	0.5	1.5	1/64	0.50	C/B *	1/64	0.50
				5/64	1/4	2.0	6.5					
RDF38	13.36	14.275	26.20	5/64	3/8	2.0	9.5	1/64	0.50	T/B	1/64	0.50
RDF50	17.43	18.288	29.46	5/64	13/64	2.0	5.0	1/64	0.50	C/B	1/64	0.50
				5/64	1/2	2.0	12.5			T/B		
RDF75	24.54	28.727	51.20	5/64	3/8	2.0	9.5	1/64	0.50	C/B	1/64	0.50
				5/64	25/32	2.0	20.0			T/B		
RDF100	32.54	36.728	63.50	3/16	3/8	5.0	9.5	1/64	0.50	C/B	1/64	0.50
				3/16	1"	5.0	25.0			T/B		
RDF138	49.55	48.488	78.99	3/8	1 3/8	9.5	38.0	1/64	0.50	T/B	1/64	0.50

* C/B = Counterbore, T/B = Throughbore

Also available are:

1. Sealed collets for coolant through application (For details refer page no. 12)
2. Any other bore size on request at extra cost

RUNOUT DETAILS:



CLAMPING RANGE ød		L (MM)	RUNOUT (TIR)	
ABOVE	UPTO		PRECISION	HIGH PRECISION
0.5mm	11/64	At Nose	0.025	0.015
3/16	2"	2D or 25.4	0.013	0.010

Ordering Instruction:

RDF75-1/4"-HP
 Collet Type Bore size Runout (TIR)