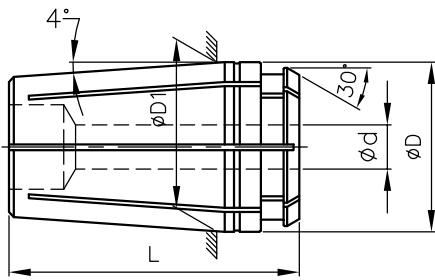


RDG COLLETS

Interchangeable with
TG Type Collets



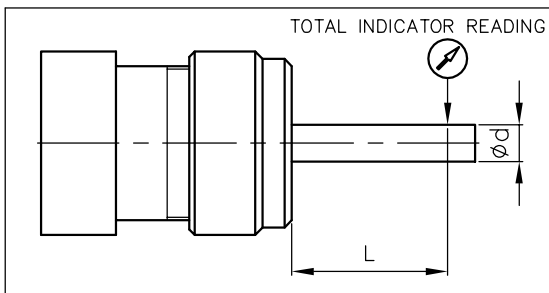
TYPE OF COLLET	ϕD	$\phi D1$	L	BORE DETAILS						COLLET COLLAPSES BY		
				ϕd Bore Range				IN STEP OF		TYPE	INCH	MM
				INCH		MM		INCH	MM			
				FROM	To	FROM	To					
RDG75	27.002	26.695	46.830	1/16	11/32	1.5	9.0	1/64	0.50	C/B *	1/64	0.50
				23/64	3/4	9.5	20.0			T/B *		
RDG100	35.026	35.000	60.325	1/16	43/64	1.5	17.0	1/64	0.50	C/B	1/64	0.50
				11/16	1"	17.5	25.0			T/B		
RDG150	50.825	50.698	76.200	1/2	1 13/32	12.5	35.5	1/64	0.50	C/B	1/64	0.50
				1 27/64	1 1/2	36.0	38.0			T/B		

* C/B = Counterbore, T/B = Throughbore

Also available are:

1. Sealed collets for coolant through application (For details refer page no. 12)
2. Any other bore size on request at extra cost

RUNOUT DETAILS:



CLAMPING RANGE ϕd		L (mm)	RUNOUT (TIR)	
ABOVE	UPTO		PRECISION	HIGH PRECISION
1.0	1.5	6.0	0.015	0.010
1.5	3.0	10.0	0.015	0.010
3.0	6.0	16.0	0.015	0.010
6.0	10.0	25.0	0.015	0.010
10.0	18.0	40.0	0.020	0.015
18.0	26.0	50.0	0.020	0.015
26.0	40.0	60.0	0.030	0.020

Ordering Instruction:

RDG100-1/4"-HP

Collet Type
Bore size
Runout (TIR)